

Ultimate LED Single Light Kit

Multiple Product Use

Product Parts

- 1 - Light Head
- 2 - Hex Wrench
- 3 - 5 x 16mm Hex Screw
- 4 - 5 x 30mm Hex Screw
- 5 - Nylon Lock Nut (x2)
- 6 - 8mm Wrench
- 7 - Quick Release Pin
- 8 - Horizontal Adapter Bracket
- 9 - Light Support Mount
- 10 - Clamp
- 11 - USB Adapter
- 12 - Light Adapter For Show N' Rise, Splash & Deluxe Geo Frames



Power Options



The USB Adapter can power up to two Light Heads and allows an additional cord to be plugged into it. Please note that the light head can be powered by other USB-based power sources like laptops.

Double Light Kit

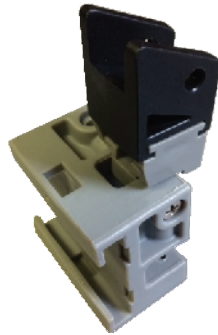
The Double Light Kit comes with twice the pieces listed above, except the Hex Wrench (2), the 8mm Wrench (6) and the USB Adapter (11).



Product Set-Up (Pop-Ups: Geometrix, Splash, Show-N-Rise)



Pop-Up products containing this piece shown to the left will require the use of an adapter (item 12), which is included in this kit.



Sit the Light Head's (1) pole in the Light Adapter (12) so that the bottom holes line up, and insert the Quick Release Pin (7) through to the other side.

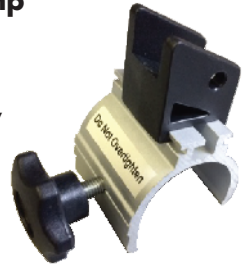
Slide the Adapter over the matching portion on the pop-up hardware.

Product Set-Up (Eurofit Displays)

Eurofit Light Clamp



Sold Separately, this adapter is specifically designed for most Eurofit displays.



Attach the clamp to your display after a graphic has been applied by clipping it to the top horizontal pole. Tighten the hand screw only enough to secure the mount. Do not over-tighten.

This clamp will require the use of the Light Adapter (12).



Sit the Light Head's (1) pole in the Light Adapter (12) so that the bottom holes line up, and insert the Quick Release Pin (7) through to the other side.

Slide the Adapter over the matching portion on the Eurofit Light Clamp.

Storage & Care

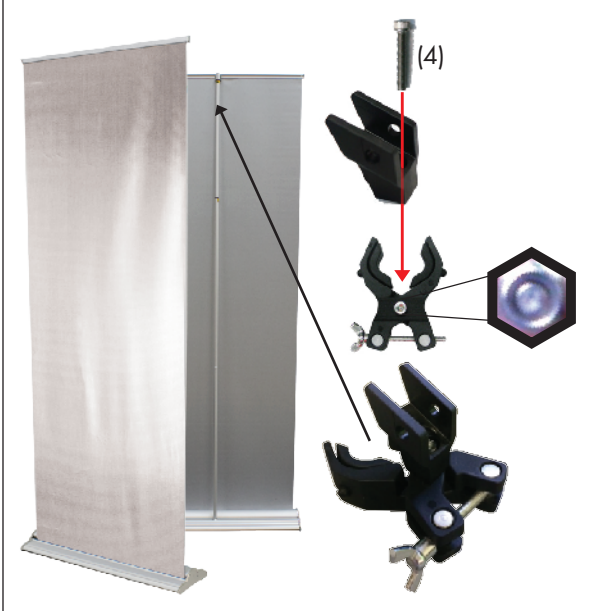
Place all product parts into carry case and store in a cool, dry location. To clean, wipe with damp cloth.

Ultimate LED Single Light Kit

Multiple Product Use

Product Set-Up (Clamp - for use with Retractable Banners, misc. other products)

Attaching to a vertical pole



Attaching to a vertical pole

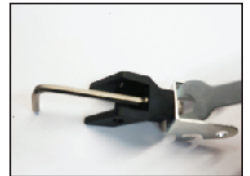
Attach the Light Support Mount (9) directly to the Clamp (10) by first inserting the 5x30mm Hex Screw (4) into the Light Support Mount's top-facing hole.

Hold the screw in place by its head and insert the protruding end through the hexagonal hole in the middle of the clamp (either the back or front will work).

Fasten a Nylon Lock Nut (5) to the end of the screw and push the Lock Nut back to fit in the clamp's hexagonal hole. Tighten the screw with the Hex Wrench (2).

Attaching to a horizontal pole

Attach the Light Support Mount (9) to the Horizontal Adapter Bracket (8) by inserting the 5x16mm Hex Screw (3) through the Mount's top-facing hole. Tightening the screw will require using the 8mm Wrench (6) and the Hex Wrench (2), shown here.



Next, position the Horizontal Adapter's open holes around the hexagonal hole in the middle of the Clamp (10). Make sure that the Light Support Mount is sitting opposite of the thumb-screw, and insert the 5x30mm Hex Screw through either side.

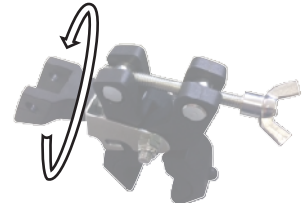
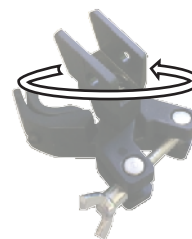


Fasten a Nylon Lock Nut (5) to the end of the screw. Once the mount is facing the right direction for your display, tighten the screw using the Hex Wrench (2) while holding the Lock Nut with the 8mm Wrench (6).

Attaching to a horizontal pole

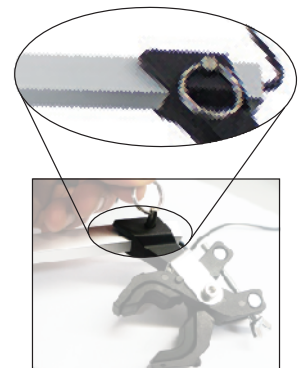


Loosen the screw to rotate the Light Support Mount to your display needs.



Attaching the Light Pole

Once the Light Support Mount is connected to the Clamp, sit the Light Head's (1) pole in the mount so that the bottom holes line up, and insert the Quick Release Pin (7) through to the other side.



Attaching to the Display

Loosen the thumbscrew to adjust the clamp opening until it fits your display. Tighten to secure.

